



GAT MONTHLY MEMBERSHIP PROGRESS REPORT

Results as of: 3/31/2022

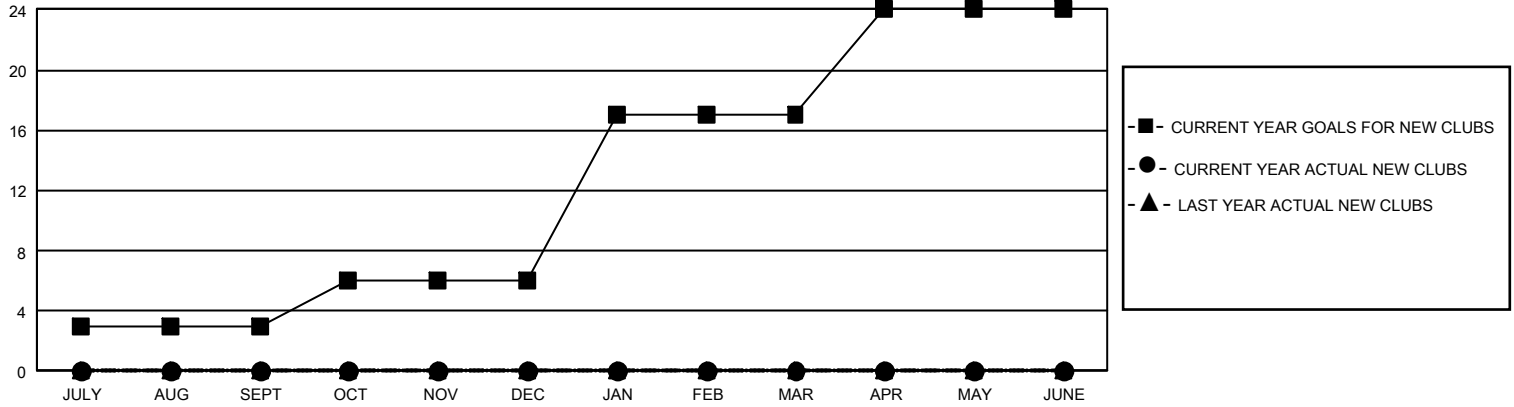
GMT Constitutional Area 5 - J, Group I

REPORT DOES NOT INCLUDE CLUBS IN UNDISTRICTED AREAS.

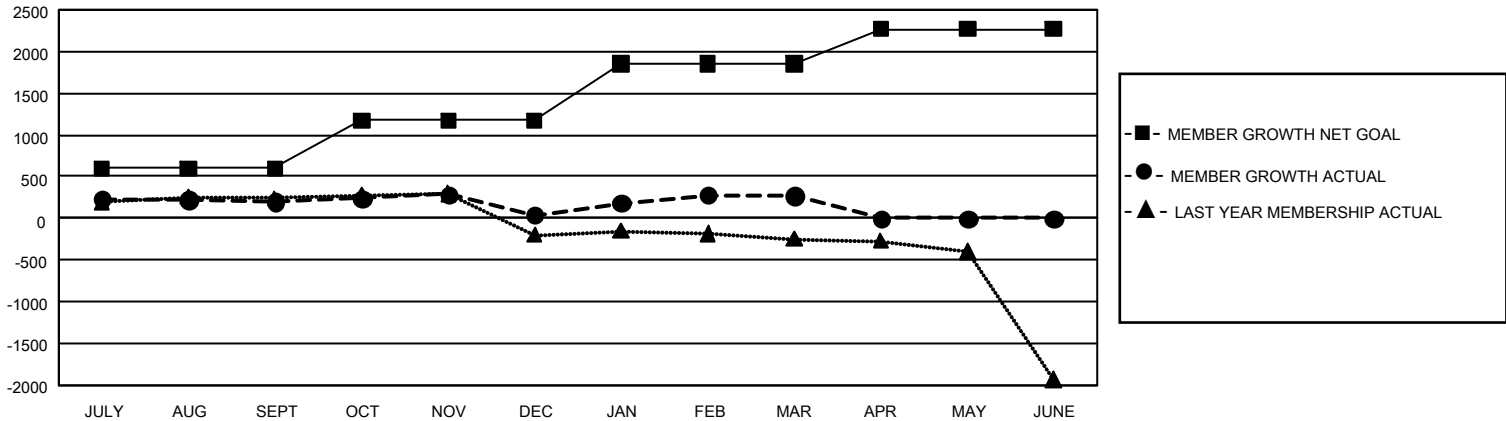
Clubs			
RESULTS FOR 2021-2022			
QUARTER	NEW CLUB GOAL	NEW CLUBS	DROPPED CLUBS
JULY/AUG/SEPT	9	0	3
OCT/NOV/DEC	9	0	2
JAN/FEB/MAR	33	0	0
APR/MAY/JUNE	21	0	0

Members			
RESULTS FOR 2021-2022			
QUARTER	MEMBER GROWTH NET GOAL	MEMBER GROWTH ACTUAL	DROPPED MEMBERS ACTUAL (including transfers)
JULY/AUG/SEPT	600	641	408
OCT/NOV/DEC	570	400	543
JAN/FEB/MAR	680	546	306
APR/MAY/JUNE	420	0	0

GOALS AND ACTUAL NEW CLUBS CUMULATIVE



GOALS AND ACTUAL MEMBERS CUMULATIVE



DROPPED CLUBS: 5	488 CLUBS OF 787 ADDED 1 OR MORE NEW MEMBERS	GENDER DISTRIBUTION	
		MALE 24,575 (74.29%) FEMALE 8,503 (25.71%) NON BINARY 0 (0.00%) PREFER NOT TO ANSWER 0 (0.00%)	
DROPPED MEMBERS		CLICK HERE FOR CUMULATIVE MEMBERSHIP DATA	TOTAL FAMILY UNIT MEMBERS 13,500
DECEASED 207 CLUB CANCELLED 0 OTHER 1,050 TOTAL 1,257	FAMILY MEMBERS PAYING HALF DUES 7,374		